

PLATE I

GEOLOGIC MAP OF A PORTION OF THE QUINCY, SPRING GARDEN, UNION VALLEY, AND BLUE NOSE MOUNTAIN QUADRANGLES, PLUMAS COUNTY, CALIFORNIA

GEOLOGY BY DOUG SHEEKS, 1976, 1977
(with contributions by DURRELL (1976) and D'ALLURA (1977))

EXPLANATION

SUPERJACENT UNITS

- | | | |
|----------|------------------------------|--|
| CENOZOIC | QUATERNARY DEPOSITS | |
| | Qal | Alluvium — <i>Q</i> |
| | Qaf | Alluvial fan — <i>Qf</i> |
| | Qls | Landslide |
| | Qit | Talus |
| | Qst | Stream terrace — <i>Qr</i> |
| | Qll | Sediments of extinct Long Valley Lake <i>Ql</i> |
| | Piw | Warner intrusive — <i>Pai</i> |
| | Plw | WARNER BASALT — <i>Ba Pv</i> |
| | Tia | INTRUSIVE ANDESITE — <i>Pi P_i Rossmore</i> |
| TERTIARY | Pp | PENMAN FORMATION — <i>P MPV</i> |
| | Pp/Mb | PENMAN-BONTA UNDIFFERENTIATED <i>PP? (according to S'Allura's map)</i> |
| | Mb | BONTA FORMATION — <i>Mb MPV</i> |
| | Mbg | Bonta gravels |
| | ϕi | INGALLS FORMATION <i>ϕi Rossmore</i> |
| El | LOVEJOY FORMATION <i>Mlb</i> | |

SUBJACENT UNITS

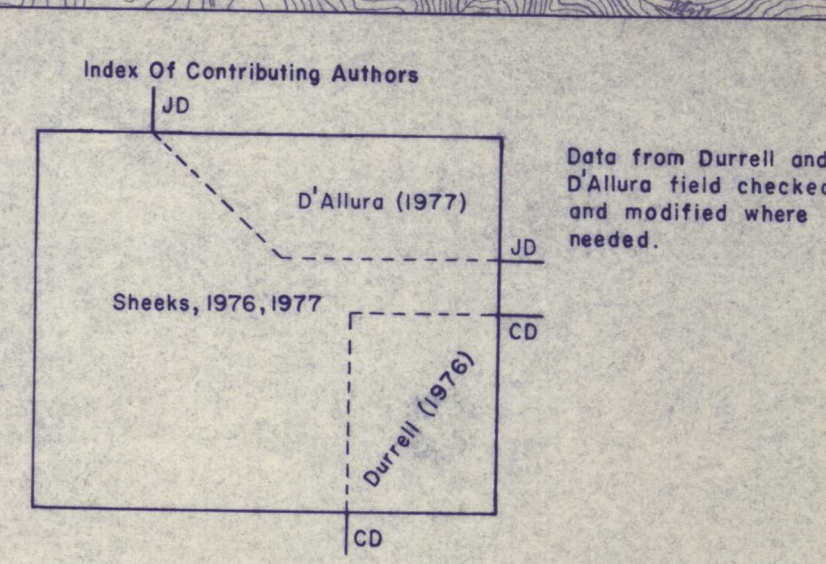
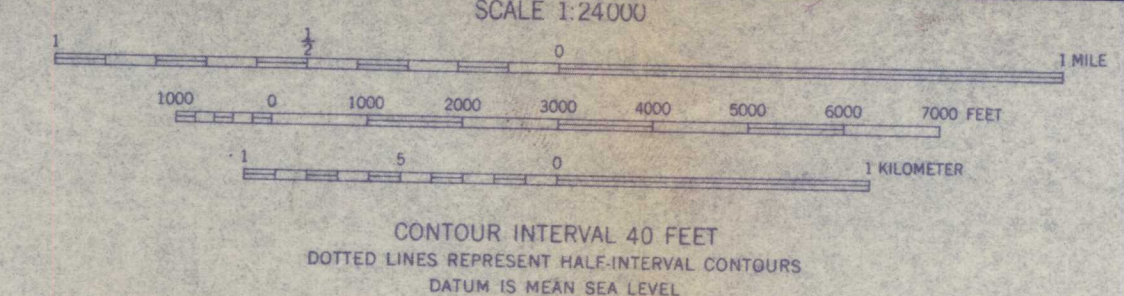
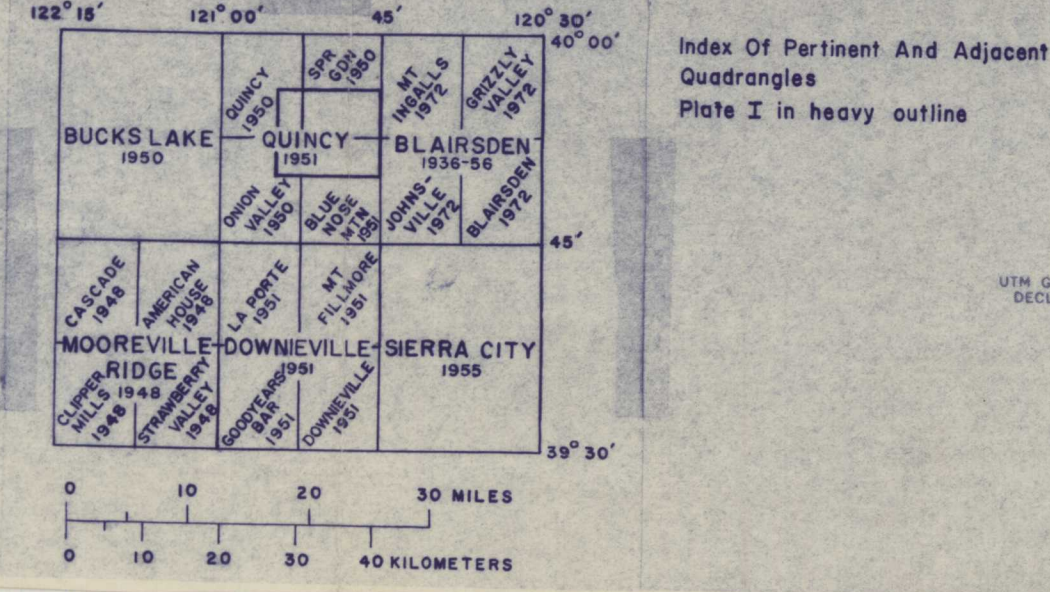
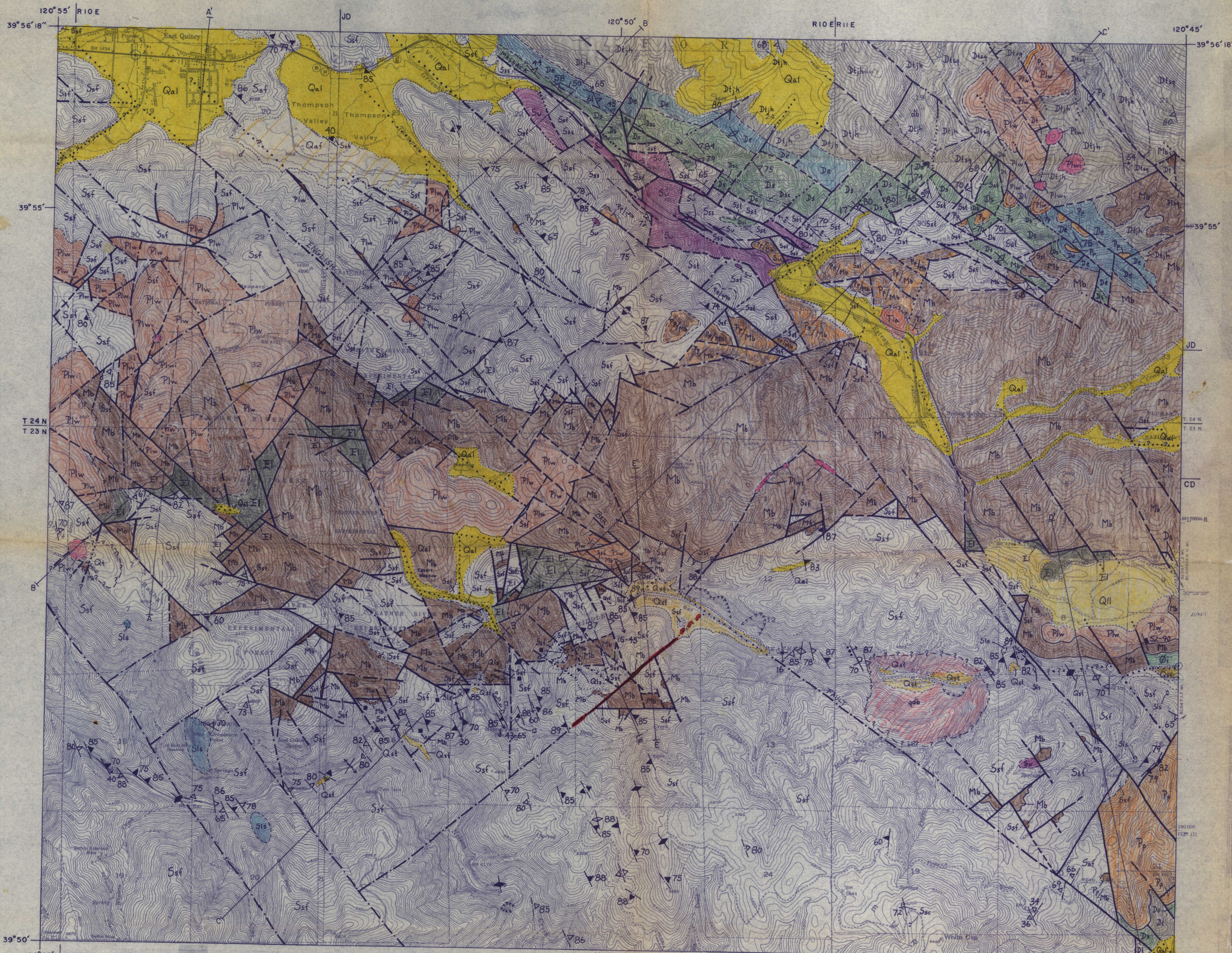
- | | | |
|-----------|--------------|--|
| PALEOZOIC | INTRUSIVES | |
| | Dt | TAYLOR FORMATION |
| | Dtsq | Squirrel Creek subunit — <i>cut</i> |
| | Dth | Johnson Hill subunit |
| | De | ELWELL FORMATION |
| | DS | SIERRA BUTTES FORMATION |
| | Dsi | Sierra Buttes intrusive |
| | Dsc | chert, slate, or argillite |
| | Ssf | SHOO FLY FORMATION |
| | Sst | Tollgate Creek subunit |
| | Sss | Spanish Creek subunit |
| | Sis | limestone — <i>ls</i> |
| | Ssc | chert <i>two small</i> |
| | Su | Ultramafic rocks, serpentinite — <i>u.m.</i> |
| | PRE-MESOZOIC | qdb |
| db | | diabase |

SYMBOLS

- | | | | |
|---|--|--|----------------------------|
| FAULTS | BEDDING | ATTITUDES | CLEAVAGE |
| — Reasonably Certain | 30 Strike and Dip | 60 Strike and Dip on shale | 60 Strike and Dip on shale |
| - - - Approximate | 30 Strike and Dip, with facing indicated | Approximate | Approximate |
| - · - · Geomorphologically Located | Approximate | Vertical | Vertical |
| · · · · Concealed | 70 Overturned | 60 Strike and Dip on sandstone, and rocks other than shale | Approximate |
| · · · · · Inferred | Graded Beds, with facing indicated, plotted along strike with measurement location | Vertical | Vertical |
| FOLDS | CONTACTS | | |
| - - - Antiform Axial Trace | Reasonably Certain | | |
| 30 Trend and Plunge of Fold Axis | Approximate | | |
| 30 Trend and Plunge of Synclinal Axis | Surficial Deposits or Concealed | | |
| 30 Trend of Vertical Fold Axial Trace | Inferred | | |
| 30 Trend of Vertical Fold Axial Trace, about which fold has been refolded | | | |

OTHER SYMBOLS

- Exposed Quaternary Erosion Surface
- Exposed Pre-Bonta Erosion Surface
- Spring
- ⊙ Side Scarp
- ⊕ Jointing



Date from Durrell and D'Allura field checked and modified where needed.