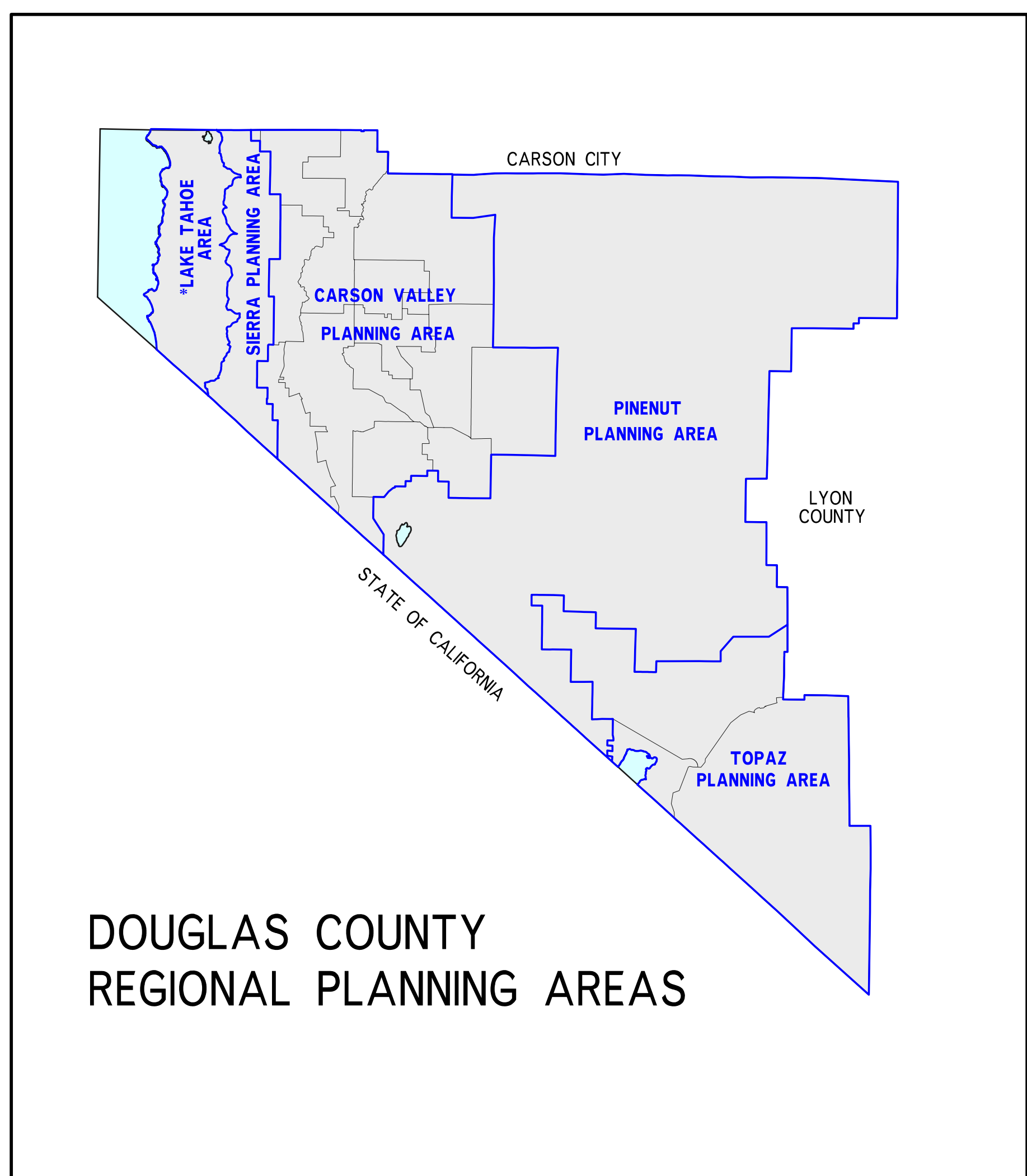
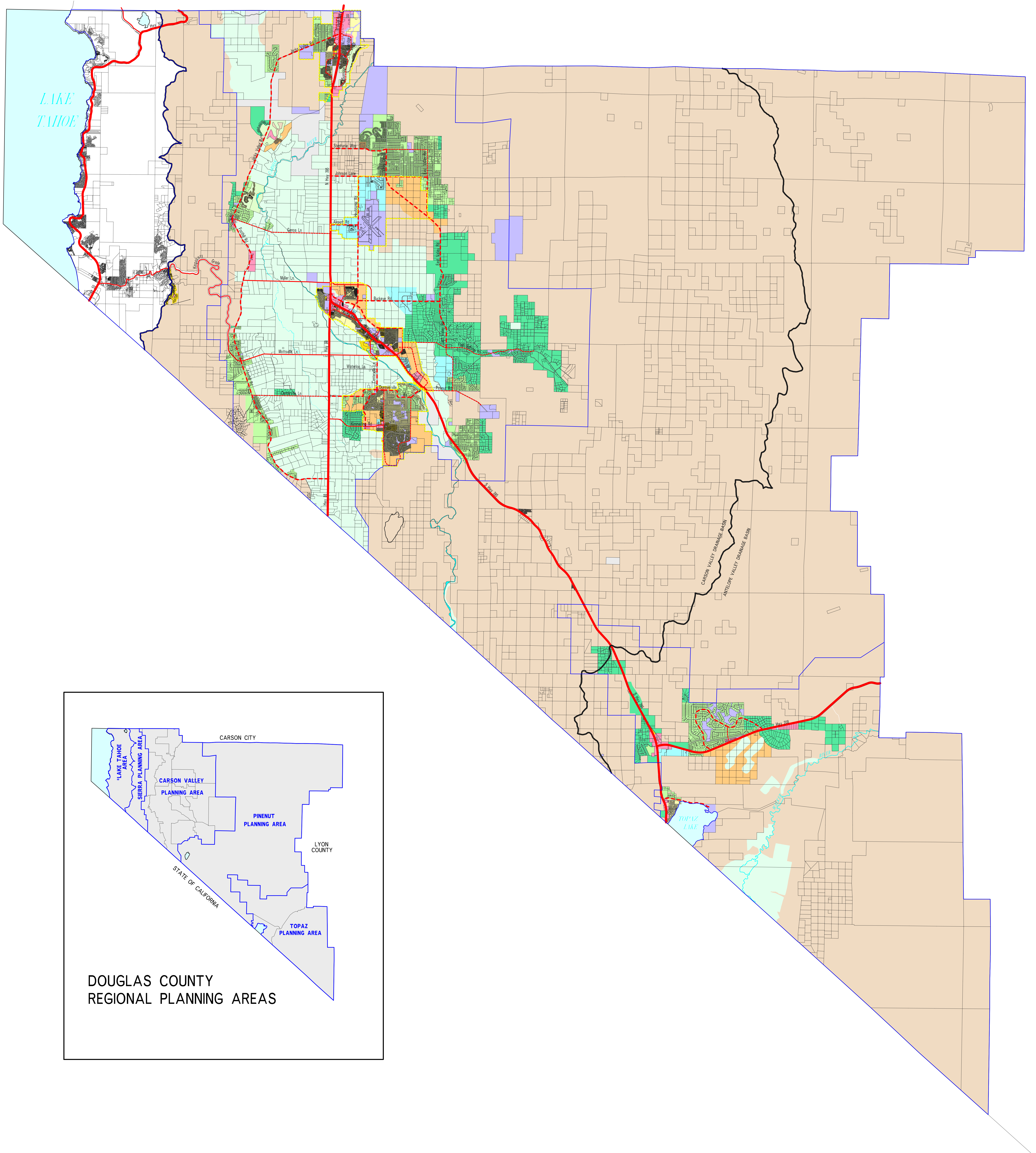


# DOUGLAS COUNTY MASTER PLAN

## LAND USE AND TRANSPORTATION



### REVISIONS

Refer to Community Area Maps for Revisions

### LAND USE

Rural Residential 5 Acres per Dwelling Unit	Commercial Floor to Area Ratio, 0.25 to 0.50	Recreation Floor to Area Ratio, 0.25 to 0.50
Single-Family Estates 1 Acre to 2 Acres Per Dwelling Unit	Industrial Floor to Area Ratio, 0.35 to 0.50	Forest and Range 40 Acres per Unit (Public), 19 Acres per Unit (Private)
Single-Family Residential 1.01 to 6 Dwellings Units per Acre	Community Facilities Floor to Area Ratio, Approx. 0.35	Receiving Area
Multi-Family Residential 6.01 to 12 Dwellings Units per Acre	Agricultural 19 Acres per Unit	Washoe Tribe Land 19 Acres per Unit

Urban Service Area Boundaries

### TRANSPORTATION PLAN

ARTERIAL		COLLECTOR	
Principal	Minor	Major	Minor



Adopted  
April 18, 1996  
Scale: 1" = 6,500'  
Print Date: 11/12/04