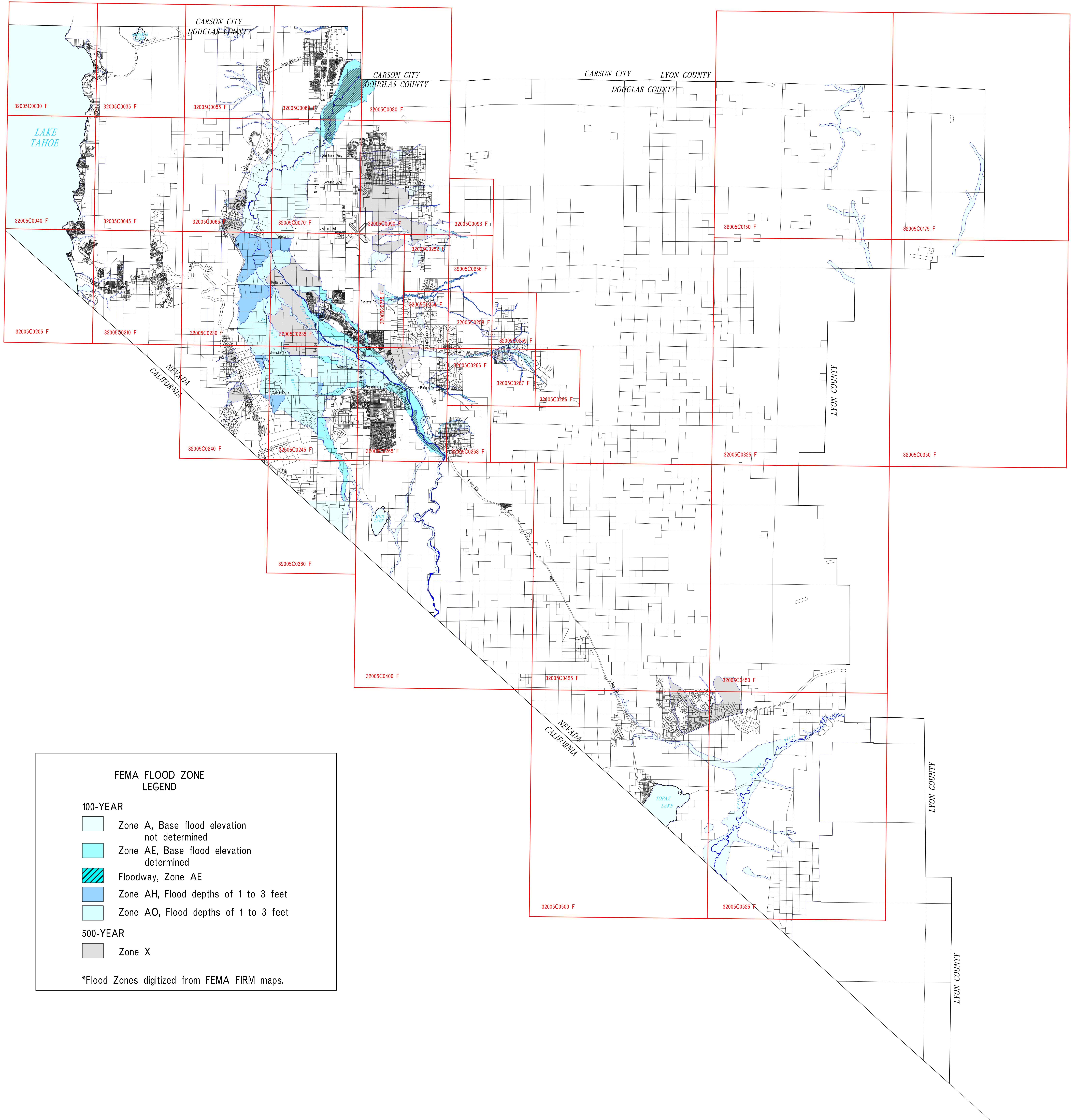
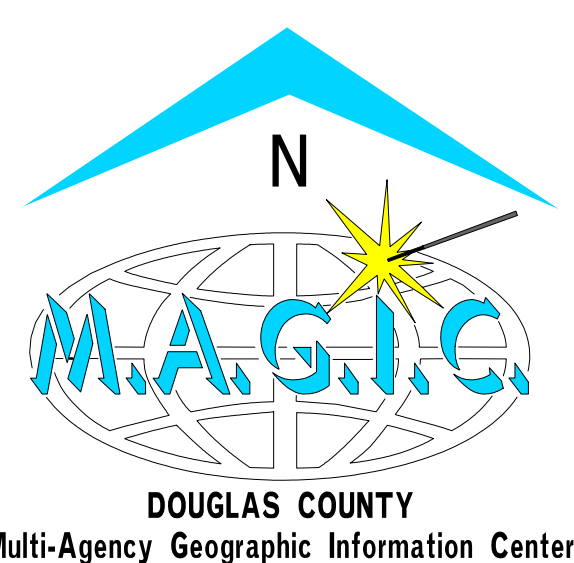


DOUGLAS COUNTY FLOOD ZONES



FOR ILLUSTRATIVE PURPOSES ONLY

Source: FEMA, Flood Insurance Rate Maps, 1999.



SCALE: 1"= 6,500'
11/12/04

The data contained herein has been compiled on a geographic information system for the use of Douglas County. The data does not represent survey delineation and should not be construed as a replacement for the authoritative source, plat maps, deeds, resurveys, etc. No liability is assumed by Douglas County or MAGIC as to the sufficiency or accuracy of the data.